

est 1979

 **Jeremy
Leaf & Co.**



3 Theobalds Avenue, London, N12 8QG

£690,000

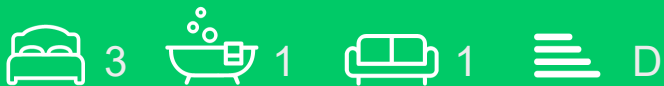
- Kitchen
- 0.4 Miles to Station
- Scope for extension (STPP)
- Reception
- Downstairs Bathroom
- Council Tax Band E
- Three Bedrooms

863 High Road, London, N12 8PT
020 8446 4295

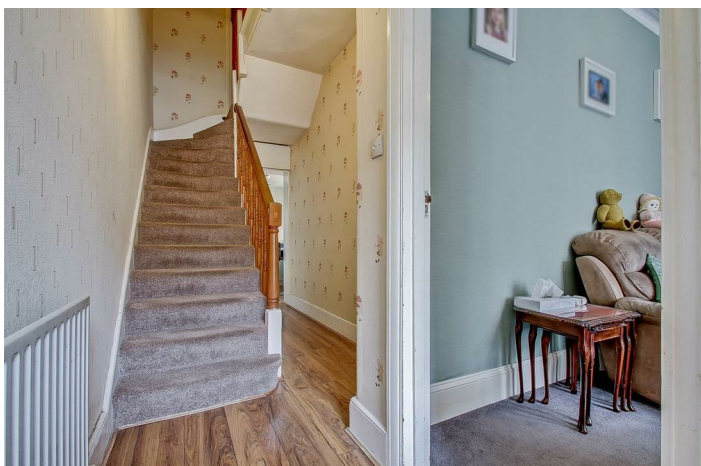
property@jeremyleaf.co.uk
<https://www.jeremyleaf.co.uk/>

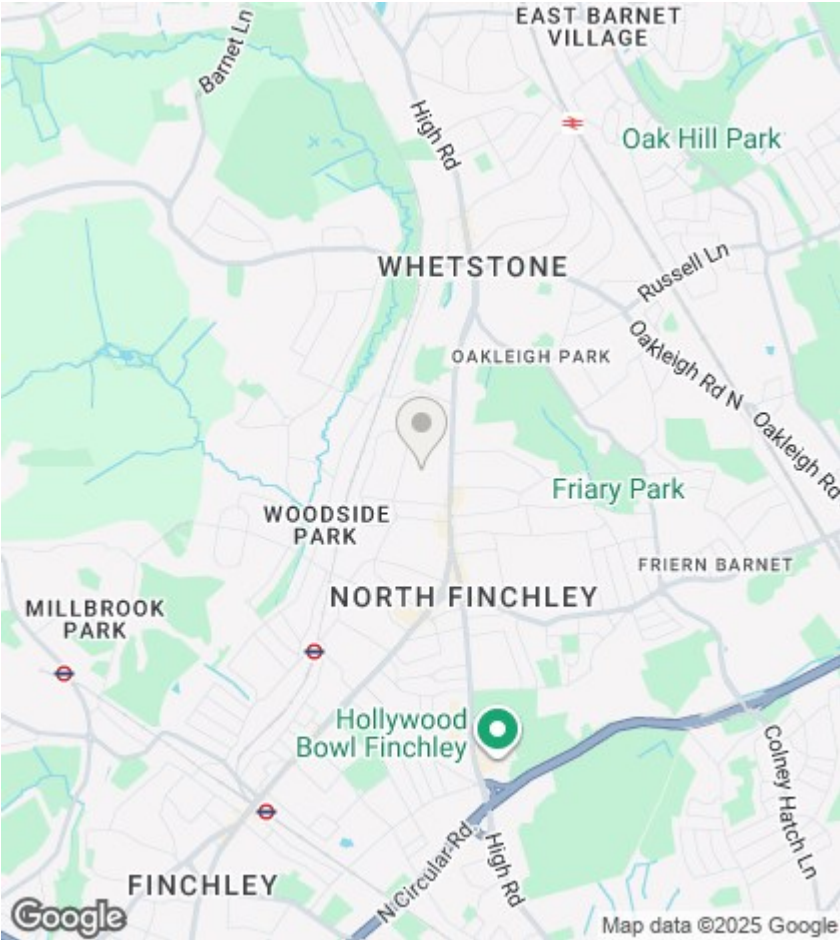
3 Theobalds Avenue, London N12 8QG

A charming three-bedroom period home situated in a highly sought-after cul-de-sac. The property features a downstairs bathroom and offers excellent scope for extension (STPP). Ideally positioned just 0.4 miles from Woodside Park tube station, it is also conveniently located for North Finchley's wide range of shopping and transport amenities. Council Tax Band E.



Council Tax Band: E





Directions

Viewings

Viewings by arrangement only. Call 020 8446 4295 to make an appointment.

EPC Rating:
D

